

GARRETT[®] METAL DETECTORS

2022 Buyer's Guide

Tom Rabin
SIGNATURE EDITION





INTRODUCING

two new Jase Robertson Signature Edition detectors from Garrett . . . as seen on the new reality treasure-hunting TV show starring Jase, his brother Jep Robertson, and their buddy Murry Crowe.

Above: Exclusive new Garrett Camo wrap pattern



APEX™

PN 1142363

Jase Robertson
SIGNATURE EDITION



Scan for more info

- Control box, upper shaft, and cuff are dipped in an exclusive new Garrett Camo pattern
- Includes FREE Duck Commander® duck call, lanyard, and searchcoil cover
- 8.5" x 11" Garrett Raider™ searchcoil provides great detection depth and Target ID
- All the power of ACE Apex, now in a limited edition camo version!

See pages 4-5 for more Apex info.



Silver Walking Liberty half dollar found by Murry Crow with his *Garrett AT Max*.



FREE Duck Commander® duck call included with each Jase Robertson Signature Edition detector.

Alert your buddies when you make a great find!



AT MAX™

Jase Robertson
SIGNATURE EDITION

PN 1142023

- Control box, upper shaft, and cuff are dipped in an exclusive new Garrett Camo pattern
- Includes MS-3 wireless Z-Lynk headphones, Duck Commander® duck call, lanyard, and searchcoil cover
- 6" x 11" Garrett Viper™ searchcoil: great depth and excellent target separation
- Fully submersible to 10 feet!

See page 12 for *AT Max* specifications.



Scan for more info

ACE APEX™



Scan for more info

Standard 6" x 11" DD Multi-Flex™ Viper searchcoil shown. Other options available.

LIGHT WEIGHT.
BROAD COVERAGE.
EXCELLENT TARGET SEPARATION.



ACE APEX™

Apex is the pinnacle of affordable flexibility in single and simultaneous multi-frequency detecting technology!

PN: 1142320

Apex with 6" x 11" DD Multi-Flex™ Viper Searchcoil (Basic Package)

PN: 1142325

Apex with 6" x 11" DD Multi-Flex™ Viper Searchcoil and MS-3 Z-Lynk Wireless Headphones

PN: 1142360

Apex with 8.5" x 11" DD Multi-Flex™ Raider Searchcoil (Basic Package)

PN: 1142365

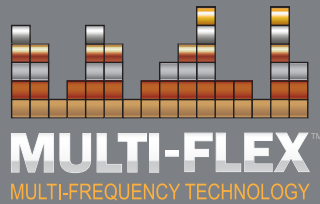
Apex with 8.5" x 11" DD Multi-Flex™ Raider Searchcoil and MS-3 Z-Lynk Wireless Headphone

MS-3 Z-Lynk Wireless headphones included with specific packages



ACE Apex - Multi-Frequency

THE POWER OF CHOICE IS YOURS WITH APEX!



APEX FREQUENCY OPTIONS:

- 5 kHz
- 10 kHz
- 15 kHz
- 20 kHz
- Multi-Frequency
- Multi-Frequency Salt

Apex has more frequency versatility than can be found on any detector in its price range!

RECHARGEABLE AND UPDATABLE

Built-in rechargeable lithium ion battery provides up to 15 hours use per charge. Micro-USB cable included for charging and for software upgrades (available from garrett.com)

HYBRID AUDIO SYSTEM:

Apex combines the simplicity of binary audio with subtle proportional audio for faint targets.

INTUITIVE, EFFICIENT CONTROLS:

Direct drive buttons for frequently used controls. Easy-access menu adjustments for other controls.

HIGH-RESOLUTION DISCRIMINATION:

20 pixels of notch discrimination

SIMPLICITY, WITH ENHANCED CONTROLS:

- 5-Tone Audible Target ID
- Oversized Digital Target ID numbers
- Full control over Volume and Iron Volume
- Backlight to view settings in low light
- 175 points of High-Resolution Ground Balance
- 6 Search Modes, plus Pinpointing
- 8 Levels of Sensitivity / Depth adjustment

8 CHANNELS PER FREQUENCY:

48 total minor frequency shifts to help overcome electrical interference.

FAST RECOVERY SPEED:

Quick reactivity provides increased ability to hear good targets mixed in among trash.

APEX ACCESSORIES



8.5" x 11" DD Multi-Flex™
Raider Searchcoil
PN: 2223700



Apex Environmental
Cover-Up
PN: 1628700



Scan for more info
and to view all
Apex accessories

OUTSTANDING SALTWATER PERFORMANCE!



Apex 10k gold ring beach find made by Michele M.

ACE Apex - Multi-Frequency

ACETM 400



Scan for more info



8.5" x 11" **PROformanceTM**
DD searchcoil included

ACE 400 - All Purpose Versatility



ACETM 400

PN: 1141260
U.S. version*

Batteries included

* Available only in the U.S.

ACETM 400i

PN: 1141560
International version**

Batteries included

** Not available in the U.S.

With Digital Target ID and Iron Audio, the **ACE 400** is powerful on coins, jewelry, and artifacts!

FREE ACCESSORIES:

(included with purchase)

Garrett ClearSound Easy Stow Headphones, ACE Environmental Cover-Up, and searchcoil cover



ACETM 300



Scan for more info



7" x 10" PROformance™
concentric searchcoil included



ACETM 300

PN: 1141150

U.S. version*

Batteries included

* Available only in the U.S.

ACETM 300i

PN: 1141450

International version**

Batteries included

** Not available in the U.S.

A powerful performer at a bargain price. The ACE 300 has excellent detection depth, rugged design, and enhanced features to help find more treasure.

FREE ACCESSORIES:

(included with purchase)

Garrett ClearSound Easy Stow Headphones, ACE Environmental Cover-Up, and searchcoil cover



ACE 300 - Powerful and Affordable

ACETM 200



Scan for more info



6.5" x 9" **PROformance**TM
concentric searchcoil
included

ACE 200 - Lightweight and Easy to learn



ACETM 200

PN: 1141070
U.S. version*

Batteries included

* Available only in the U.S.

ACETM 200i

PN: 1141370

International version**

Batteries included

** Not available in the U.S.

Lightweight, powerful, entry-level detector that's easy to learn. Simple One-Touch operation; turn on and begin hunting!

Includes three search modes, Digital Target ID, a coin depth indicator, four sensitivity adjustments, and a 6.5" x 9" PROformance searchcoil.

Junior stem kit assembly is available for ACE detectors.
See accessories page on website.

ACE OVERVIEW AND APPLICATIONS

ACE 400/400i:

Expect great detection depth from its powerful DD coil. Also includes the Iron Audio feature, a higher frequency, and volume control headphones.

Ideal for: Coins, jewelry, relics, dry beach, fresh water wading, competition events, cache hunting, and it has improved features for prospecting.

ACE 300/300i:

A powerful performer at a bargain price. The ACE 300 has more modes than an ACE 200 and enhanced features to help find more treasure.

Ideal for: Coins, jewelry, relics, dry beach, fresh water wading and competition events. Can be used for entry-level prospecting or cache hunting.

ACE 200/200i:

Light weight, powerful, entry-level detector that's easy to learn. Simple One-Touch operation; turn on and begin hunting!

Ideal for: Coins, jewelry, dry beach and fresh water wading. Can also be used for entry-level prospecting and relic hunting.

TECHNICAL SPECIFICATIONS: Garrett ACE Detectors

COMPARISON CHART	ACE 400	ACE 300	ACE 200
Digital Target ID (0 to 99 scale)	✓	✓	✓
Iron Discrimination Segments	4	4	1
Notch Discrimination	Adjustable	Adjustable	Fixed
One-Touch Treasure Hunting	✓	✓	✓
Search Modes	5 (Plus Pinpoint)	5 (Plus Pinpoint)	3
Sensitivity/ Depth Adjustments	8	8	4
Pinpoint	✓	✓	No
Frequency	10 kHz, adjustable	8 kHz, adjustable	6.5 kHz, fixed
Camlocks for more stem stability	✓	✓	✓
Audio Tone ID Levels	3	3	3
Iron Audio™	✓	No	No
Target Depth Indicator	✓	✓	✓
Battery Condition Indicator	✓	✓	✓
Standard Searchcoil	8.5" x 11" DD PROformance™	7" x 10" concentric PROformance™	6.5" x 9" concentric PROformance™
Headphones Included	✓	✓	No
Length (Adjustable)	40" to 53" (1.06m - 1.29m)	40" to 53" (1.06m - 1.29m)	40" to 53" (1.06m - 1.29m)
Total Weight	2.9 lbs (1.32 kgs)	2.8 lbs (1.27 kgs)	2.75 lbs (1.25 kgs)
Batteries	4 AA (included)	4 AA (included)	4 AA (included)
Warranty	2 Year, Limited Parts/Labor	2 Year, Limited Parts/Labor	2 Year, Limited Parts/Labor
What Else is in the Box?	Easy Stow headphones, ACE cover-up, coil cover, manual	Easy Stow headphones, ACE cover-up, coil cover, manual	Owner's manual



AT Max - Fully Wireless Maximum All Terrain Performance

AT MAX™



Scan for more info



8.5" x 11" PROformance™ searchcoil included



AT MAX™

PN 1142060
U.S. version*

Batteries included

* Available only in the U.S.

AT MAX™

PN 1142160

International version**

Batteries included

** Not available in the U.S.

This is Garrett's most powerful All Terrain VLF detector. Includes built-in Z-Lynk™ wireless technology, advanced ground balance options, True All-Metal Mode, adjustable Threshold, All Metal Iron Audio™, and so much more!

8.5" x 11" searchcoil cover included
PN: 1606600



Z-Lynk MS-3 Wireless headphones included
PN: 1627710



ATTM PRO



Scan for more info



8.5" x 11" PROformance™ searchcoil included



ATTM PRO

PN 1140460
U.S. version*

Batteries included
* Available only in the U.S.

ATTM PRO INTERNATIONAL

PN 1140560
International version**

Batteries included
** Not available in the U.S.

Fully waterproof to 10 feet, the AT Pro has been a real game changer for shallow water hunting. With both Standard and Proportional audio modes, the AT Pro offers the user a choice in target response. Its impressive recovery speed, target separation, and detection depth have made the AT Pro a true legend for jewelry, coins, and relic hunting.

Includes MS-2 Wired headphones and 8.5" x 11" DD PROformance searchcoil



MS-2 headphones included

AT Pro - Bring hunted-out sites back to life!

WHICH GARRETT ALL-TERRAIN DETECTOR IS BEST FOR YOU?

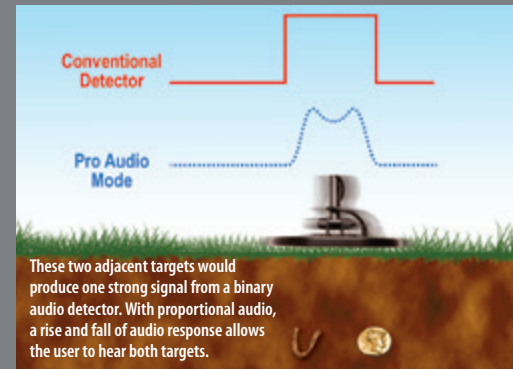
AT Max—Offers the deepest detection, True All Metal Mode, and wireless capability. Recommended for all terrains, including both salt and freshwater environments. Use for coins, jewelry, relics, gold, and competition hunts.

AT Pro—Choose from easy-to-learn Standard Modes or advanced Pro Modes for more target information and depth. Can be submerged in either saltwater or freshwater. Great for coins, jewelry, relics, and gold.

COMPARISON CHART	AT^{MAX}	AT^{PRO}
Z-Lynk™ Wireless (integrated)	✓ (With MS-3 Z-Lynk headphones included)	No
Iron Discrimination Segments	44	40
True All-Metal Mode	✓	No
Backlight	✓	No
Volume Adjustment	✓	No
Notch Discrimination	Adjustable	Adjustable
Search Modes	4, all Pro Audio	6 (3 Standard, 3 Pro)
Proportional Audio	✓	✓
Standard Binary Audio	No	✓
Fast Recovery Speed	✓	✓
Sensitivity/ Depth Adjustments	8	8
Iron Audio™ (Disc. Modes)	✓	✓
Iron Audio™ (All Metal Mode)	✓	No
Threshold Adjustment	✓	No
Digital Target ID	✓	✓
Ground Balance, Auto/Manual	✓	✓
Ground Balance Window™	✓ (Automatic)	No
Pinpoint	✓	✓
Waterproof to 10 feet (3m)	✓	✓
• Freshwater use	✓	✓
• Saltwater use	✓	✓
Frequency	13.6 kHz, adjustable	15 kHz, adjustable
Audio Tone ID Levels	3	3
Target Depth Indicator	✓	✓
Standard Searchcoil	8.5" x 11" DD PROformance™	8.5" x 11" DD PROformance™
Length (Adjustable)	43" to 56" (1.09m - 1.4m)	43" to 56" (1.09m - 1.4m)
Total Weight	3.03 lbs (1.4 kgs)	3.03 lbs (1.4 kgs)
Batteries	4 AA (included)	4 AA (included)
Battery Condition Indicator	✓	✓
Warranty	2 Years	2 Years



UNDERSTANDING THE PROPORTIONAL AUDIO FEATURE



The **AT Max**, **AT Gold**, and **AT Pro** each feature advanced, proportional (Pro) audio modes. This allows the user to: hear subtle changes in a target's response; better judge a target's size, shape and depth; and enjoy a much faster recovery time when detecting adjacent targets.

The **AT Pro** also includes three Standard audio modes, which provide a full-strength beep regardless of a target's amplitude. Many detectorists prefer this simpler, binary (either on or off) target response.

ALL TERRAIN ACCESSORIES



Scan to see more AT accessories



GTI 2500



See a target's size and depth before you dig!



9.5" PROformance™ Imaging searchcoil included



Scan for more info



GTI 2500

PN 1120570
batteries included

Spend less time digging trash and more time digging treasure.

- **Graphic Target Imaging™ (GTI)**
Garrett Exclusive feature that shows true target size (5 size options) and depth.
- **All Metal, Non-Motion Deepseeking Mode**
Provides greatest possible detection depth and sensitivity.
- **Ground Balance**
Automatic and Manually Adjustable. Also: FastTrack™ Ground Balance, for use in All-Metal Mode.

GTI 2500 - Know before you dig!

AXIOM™

PN 1142720
Visit website for other Axiom offerings



ULTRA-PULSE™
Technology

Advanced pulse technologies provide enhanced sensitivity and complete versatility in the most extreme mineralized soils and in saltwater. Choose from four settings, ideally engineered for finding all types of gold, from larger nuggets to sub-gram pickers.



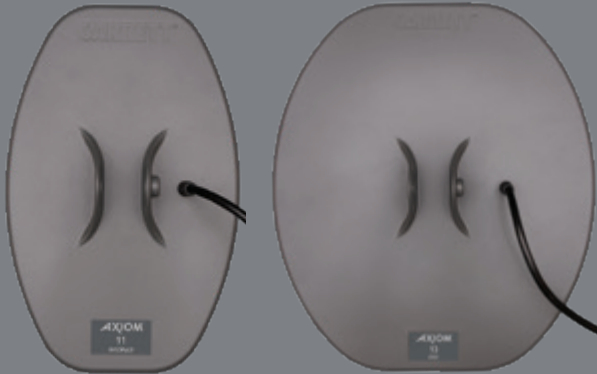
Extreme Detection on Sub- $\frac{1}{10}$ th -Gram Gold in All Ground Conditions

- **Four Search Mode Options**
Choose from Fine, Normal, Large or Salt
- **Four Ground Tracking Speeds**
Choose Off, Slow, Medium or Fast
- **Two Audio Type options**
Choose from smooth VCO Audio (with proportional pitch response) or sharp PWM (Pulse Width Modulation) audio.
- **Iron Check**
Use with DD coils to audibly identify undesired iron targets.
- **User-Adjustable options**
Threshold, Volume, Sensitivity, Tone, Backlight, and more
- **Long battery capacity**
Built-in Lithium Ion battery provides approx. 16 hours of field use per charge.
- **Built-in Garrett Z-Lynk™ Wireless Technology**
- **Well balanced and lightweight**
with all carbon-fiber telescoping stems.

AXIOM - TRUE PERFORMANCE, ABSOLUTE QUALITY



Included Items:



11" x 7" coil included
(Mono or DD)

13" x 11" coil included
(Mono or DD)

Two-coil configuration varies by kit.

BIG OR SMALL: Find it All!

Gold nuggets, ranging from 0.7 to 0.06 grams, found by Axiom user Keith S. in North America



Soft carry case

12V cigarette to alligator cables

USB-C cable

Cigarette adaptor

Headphones (varies by kit)

Axiom battery booster pack

12V wall charger and adaptors

Included Items vary by kit



An Axiom field user in Zimbabwe with his first Axiom gold nugget.

Terra-Scan™ Ground Balance System



Axiom's advanced system provides independent dual-channel ground balance that covers the full range of mineralization, from heavily mineralized magnetic ground to saltwater, and everything in between, allowing the Axiom to find gold where other pulse detectors can't.



Scan to learn more about the new Axiom

AXIOM - TRUE PERFORMANCE, ABSOLUTE QUALITY

GARRETT®
GOLDMASTER® 24k

PN: 1142650
batteries included



Scan for more info

NEW

6" x 10" DD searchcoil



GOLDMASTER® 24k

Headphones
included



Originally produced by White's Electronics, the Goldmaster 24k by Garrett offers powerful performance on tiny gold nuggets with its advanced features and 48 kHz operating frequency.

Right: Discovery Daisy shows off a gold nugget that she found while prospecting out in Arizona with her GM24k.

FIND THE GOLD OTHERS HAVE MISSED

XGB GROUND BALANCE SYSTEM

This automatic ground tracking system allows the GM24k to be used in a wide variety of ground conditions with more stable operation and less ground noise.

TWO AUDIO MODES

Users can select the 2-tone Beep Mode to help distinguish target types or the standard VCO "Zip" Mode, where audio pitch and volume rise as signal strength increases.

VARIABLE SELF ADJUSTING THRESHOLD

Variable SAT speed control allows user to adjust the threshold recovery speed to help reduce the effects of changing ground mineralization.



FULL USER CONTROL

- TracLock to lock current ground balance setting
- Ground Grab to quickly update ground setting
- Adjustable Iron Cancel feature for hot rocks, iron trash
- Backlight to view settings in low light
- Digital Target ID to help distinguish between ferrous and non-ferrous targets
- Volume and Threshold adjustments
- 10 levels of Sensitivity / Depth adjustment

RECHARGEABLE OPERATION

Eight NiMH rechargeable batteries (included) will power the GM24k for up to 20 hours. Also included (see below): 12v charge cables for car or battery and AA battery recharging kit with universal adaptors.



Intuitive user controls are at your fingertips



Goldmaster 24k - Featuring 48 KHz Performance

ATX™



Scan for more info

High-End, All-Terrain Pulse Performance

*Highly sensitive on tiny gold.
Extends depth in the most
extreme mineralized soils.*



ATX™ EXTREME PULSE INDUCTION

3 Standard coil options

PN: 1140860
PN: 1140870
PN: 1140880

ATX with 10" X 12" DD open coil
ATX with 11" X 13" DD closed coil
ATX with 11" X 13" Mono closed coil

ATX includes:

MS-2 headphones, soft carry case, AA alkaline and rechargeable batteries, battery charger, coil cover, detector sling, and owner's manual



ATX - Hunt Once, Get it all!



Easy Access Adjustments

Single push-button controls for Sensitivity, Discrimination, Threshold, Volume, Ground Track, Frequency Scan, and more can be adjusted with one hand.



ATX provides maximum detection on all targets at the same time. No need to switch modes to enhance detection on one target while degrading another.

Adjustable Operating Lengths



- Advanced Ground Balance
- Quick Iron Check feature
- Quickly and fully collapsible
- Rugged military-spec design
- Motion and Non-Motion Modes
- All terrain use: fully submersible to 10-foot (3m) depth

20 ounces of gold nuggets and specimen recovered by Mark with his ATX in Western Australia.



ATX™ DEEPSEEKER PACKAGE

Find deeply buried objects, large gold, caches, relics and more with the oversized ATX DeepSeeker searchcoil. Buy the package and save money—plus get a free hard case!

- PN: 1140820—10" x 12" DD Coil Package
- PN: 1140840—11" x 13" Mono Coil Package
- PN: 1140830—11" x 13" DD Coil Package

Includes:

- ATX with your choice coil
- Soft carry case
- Battery charger
- MS-2 headphones
- AA alkaline and rechargeable batteries
- Coil covers

PLUS:

15" x 20" Deepseeker mono searchcoil, Military-grade hard case and detector sling



ATX - Hunt Once, Get it all!

ATTM GOLD



Scan for more info



5" x 8" **PROformance™**
searchcoil included



ATTM GOLD

PN 1140680
batteries included

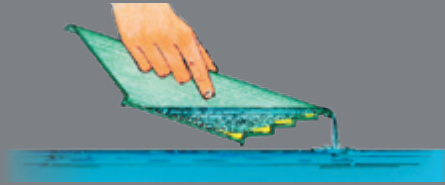
Its higher frequency, True All Metal Mode, and small searchcoil make it hot on tiny gold nuggets, relics, and small jewelry. Its advanced ground balance features make the *AT Gold* ideal for prospecting, relic hunting, and freshwater hunting.

MS-2 headphones
included



AT Gold - Ideal for gold, submersible to 10 feet!

Garrett's 90° riffled design prevents gold from sloshing out of the pan.



GOLD PANS



15" SuperSluice

PN 1650400

- Traps fine gold to nuggets over 1 oz.



10" Backpacker

PN: 1650100

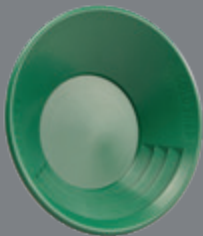
- Great for wet /dry panning or finishing



14" Sifter/Classifier

PN: 1650200

- Sifts gold, jewelry, relics and debris
- Fits 5 gallon bucket



14" Gold Trap™

PN: 1651100

Garrett's Patented Offset, Acentric Design Delivers Improved Performance!

- Expands the pan's floor size by 33%, as compared to conventional 14" gold pans.
- Maintains the long panning surface and optimum angle necessary for effective panning.

GOLD PAN KITS



Deluxe Gold Pan Kit

PN: 1651410

- 14" Gold Trap Pan
- 15" SuperSluice Pan
- 14" Sifter/Classifier
- 10" Backpacker Pan
- Gold Guzzler bottle
- 2 Gold vials
- Tweezers/magnifier
- *How to Find Gold* field guide by Charles Garrett / Roy Lagal



Scan for more info



Gold Pan Kit

PN: 1651310

- 14" Gold Trap Pan
- 14" Sifter/Classifier
- 10" Backpacker Pan
- Gold Guzzler bottle



- 2 Gold vials
- Tweezers/magnifier
- *How to Find Gold* field guide by Charles Garrett and Roy Lagal

Sea Hunter[™] Mark II



Scan for more info

Wreck Diving's Trusted Veteran



OPTIONAL:
10" x 14" Mono Searchcoil
PN: 2215300

- **Superior Automatic Salt Elimination Ability**
using Pulse Induction technology.
- **User Adjustable Controls**
Elimination, Audio Threshold
- **Independently Sealed Battery Compartment**

Recommended for saltwater environments. Includes two discrimination modes

Sea Hunter[™] Mark II



PN 1151970



INCLUDED:
Submersible headphones, Hip mount holster,
Batteries, and Belt assembly

Sea Hunter - Explore to 200 feet



PRO-POINTER® AT



All Terrain Pinpointer

PN 1142200
battery included



Scan for more info



The Pro of All Terrain Pinpointers... Now **Wireless!**

Unique Features

- **One-Press Syncing** to Garrett Z-Lynk wireless receivers.
- **Wireless Convenience:** Hear both detector and pinpointer alarms in your headphones, even in noisy environments (beach, high winds, congested urban areas, organized hunts).



* Radio signals do not transmit through water, so when hunting fully submerged, you must rely upon the *Pro-Pointer's* vibration and audio alerts without the benefit of headphones.

**Fully waterproof
to 20 feet (6 meters)**

PRO-POINTER® AT

PN 1140900
battery included



Scan for more info



Common Features on both Pro-Pointers:

- **Single-button operation**
- **Lost Pro-Pointer Alarm:** After 5 minutes with no button presses, the pinpointer emits periodic warning chirps.
- **Automatic power off** after one hour of warning chirps
- **Patented scraping blade**
- **Lanyard attachment loop**
- **LED flashlight** for low light searches.
- **Belt holster, 9-volt battery included**
- **Ruler in inches and centimeters**
- **Adjustable sensitivity**

Waterproof Pro-Pointers: AT Z-Lynk & Pro-Pointer AT

GARRETT PINPOINTERS OVERVIEW, APPLICATIONS

GARRETT[®] PRO-POINTER[®] II



Scan for more info



FIND YOUR TARGETS FASTER!

GARRETT[®] PRO-POINTER[®] II

PN 1166050
battery included

- Target retuning capability**
 Fast on/off cycles allow users to quickly tune out the detection of saltwater, wet sand, or highly mineralized ground.
- Proportional audio/vibration pulse**
- Lost Pro-Pointer Alarm:**
 Emits warning chirp for 60 minutes if left on more than 5 minutes without a button press.



The Pro-Pointer II features a patented scraping blade for searching sand, soil or gravel.

TECHNICAL SPECIFICATIONS: PRO-Pointer ATZ-Lynk vs PRO-Pointer AT vs PRO-Pointer II

COMPARISON CHART	GARRETT [®] PRO-POINTER [®] AT <i>Z-Lynk</i>	GARRETT [®] PRO-POINTER [®] AT	GARRETT [®] PRO-POINTER [®] II
Z-Lynk Wireless Technology	✓	No	No
Proportional audio/vibration pulse for target indication	✓	✓	✓
Fully waterproof?	Yes, to 20 feet (6m). IP 68	Yes, to 20 feet (6m). IP 68	No. Weatherproof, splashproof. (IP 66)
360° side scan detection plus pinpointing tip	✓	✓	✓
Fast Retune (quick-press to shrink detection field)	✓	✓	Use quick Power off/on retune method
Adjustable sensitivity	✓	✓	No
Lost Pro-Pointer alarm	✓	✓	✓
Automatic power off	✓	✓	✓
Ruler with inch/cm markings	✓	✓	No
Lanyard attachment loop	✓	✓	✓
Automatic tuning at turn-on?	✓	✓	✓
Patented scraping blade	✓	✓	✓
LED light	✓	✓	✓
Operating Temperatures	-4°F (-20°C) to 130°F (54°C)	-4°F (-20°C) to 130°F (54°C)	-4°F (-20°C) to 130°F (54°C)
Total weight	6.5 oz. (0.2 kg) w/battery	6.5 oz. (0.2 kg) w/battery	6.5 oz. (0.2 kg) w/battery
Battery	9V (included)	9V (included)	9V (included)
Warranty	2 Year, Limited Parts/Labor	2 Year, Limited Parts/Labor	2 Year, Limited Parts/Labor
Web holster	Included	Included	Included



Pro-Pointer II - Recover Targets faster

REAPER™



Scan to see more about the REAPER and other searchcoils

14" x 11" Garrett Reaper Searchcoil

This coil provides a 25% increase in ground coverage as compared to an 8.5" x 11" DD coil. This makes the Reaper perfect for: working large fields, searching for caches, and swinging above stubble and other field obstructions that often hinder detection depth.

It also offers a significant increase in detection depth on medium to large-sized targets, while still maintaining excellent detection on small targets. This big coil is rugged and fully submersible.

PN 2223900: Multi-Flex (Apex)

PN 2224100: AT Series

PN 2224300: ACE Series



Scan to see full line of Garrett detecting accessories



Garrett Detecting Gloves

Three sizes available in new color. Protect your fingers against cuts and abrasions while digging for targets. Palm and knuckle areas include foam padding to reduce impact.

PN: 1628101 Medium | 1628102 Large | 1628103 XL



Gear up for success in the field!



Garrett™ All Terrain Dig Pouch

Designed for water hunting, with mesh drain screens, but this sturdy pouch can also be used to sift dirt from your finds while land hunting. Includes two pouches for sorting your treasure from trash, plus a small outer pocket for your best finds. Includes Pro-Pointer holster and lanyard clips. Extended belt to fit all sizes.

PN: 1664800



Scan for more accessories



Garrett™ Razor Relic Shovel

36" total length with 9" digging blade. Comfortable T-handle and robust steel blade with cutting edge teeth to power through roots and tough soil. Includes Garrett carry sheath for blade protection. Weight: 61.6 oz.

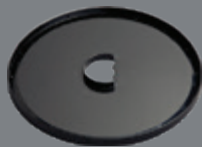
PN: 1664900



NEW Garrett Detecting Accessories



Scan for more options



9.5" Coil Cover
PN: 1606500



6" X 11" Coil Cover
PN: 1613100



4.5" Coil Cover
PN: 1604200

SEARCHCOIL COVERS



You can prevent this!

Protect your investment with Garrett searchcoil covers.

BAGS/BACKPACKS



Scan for more options

Garrett Sport Daypack (shown at right)
This narrow profile pack will hold all the gear and supplies for a full day of detecting. Approximately 14" interior height x 11.5" width.

Includes: six zippered compartments; two internal pouches to separate items; internal sunglasses pouch; exterior webbing grid to secure other items; hideaway hipbelt; side straps to cinch up pack or to secure a jacket or rain gear.
PN: 1627200



Digital Camouflage Soft Case, Universal Detector
Padded travel/storage bag, 50" length with full zipper opening, carrying handle and backpack straps.
PN: 1616901



Stow and go—Holds any current Garrett detector without removing the searchcoil.



RECOVERY TOOLS

Camo Digger's Pouch
This 10" deep zippered bag secures with its own belt. Fits up to 48" waist.
PN: 1612900



Exterior MOLLE-type webbing grid is ideal for attaching PRO-Pointer, cell phone, digging tools, etc.



Garrett "Keepers" Finds Box
Plastic treasure "Keepers" box with foam slits in one compartment for protecting small coins, buttons, and other treasures. Access two separate sides, with sturdy latches, that will hold your best finds.
PN: 1627900



Garrett™ Edge Digger
(7.5" digging blade; 12" total length)
Robust steel blade with cutting edge teeth. Non-slip blade guard with comfortable rubber handle. Includes Garrett carry sheath for belt mount use.
PN: 1626200



Scan for more options



Z-Lynk SPECIFICATIONS

Operating Frequency: 2.4 GHz band frequency hopping (prevents interference with nearby headphones and other wireless devices)

Environmental: Water resistant; do not submerge.

WR-1 (receiver): IP 52: protects against light rain

WT-1 (transmitter): IP 64: protects against heavy rain

Speed: 17 millisecond delay

Volume: Adjustable via WR-1 unit

Battery Type: Rechargeable Lithium Ion

Battery Life: Up to 30 hours per charge

Charging: USB (cables included)

Warranty: 2 years, limited parts and labor

Operating Temperature: -20°C (-4°F) to 60°C (140°F)

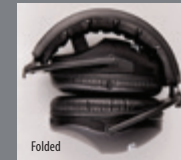


Scan for more options



Scan for more options

GARRETT HEADPHONES



Folded



Garrett MS-3 Wireless Z-Lynk Kit!

PN:1142210



Garrett MS-3 Z-Lynk Wireless Headphones

- Built-in Z-Lynk receiver. High fidelity audio.
- Use with any Garrett Z-Lynk detector or transmitter module.
- Volume control. USB charging cable included.

PN: 1627710



Submersible Headphones

- For use with Garrett AT Max, AT Pro, AT Gold, ATX, and Sea Hunter Mark II metal detectors.
 - Padded ear cups
- PN: 2202100

Scan for more options on Garrett branded apparel and books



GARRETT GEAR



Since 1974

Garrett "ACE SUCCESS" Shirt

Moisture-wicking polyester material.
PN: 16280XX S-3XL



Garrett "EST '64" Cap
Distressed Mesh Trucker Cap
PN: 1621100



Garrett "ACE" Cap 100% cotton, embroidered.
One size fits most with Velcro strap.
PN: 1664400



Visit garrett.com for details on all RAM Books

View sample pages from any title!

garrett.com

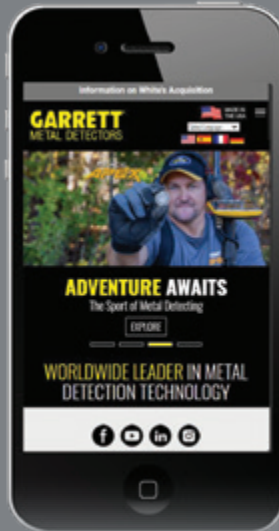
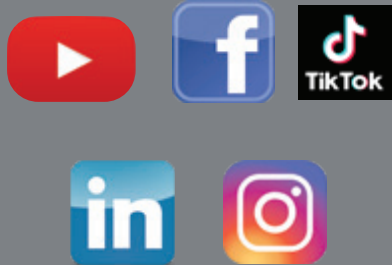
Accessories - Z-Lynk, Headphones, etc.



Experience the
power of the new
REAPER™
14" DD Searchcoil

See
pg. 21

Keep connected
with Garrett!



Interactive
Catalog



GARRETT®
METAL DETECTORS



GARRETT METAL DETECTORS

1881 W. State Street
Garland, TX 75042
Tel: 1.972.494.6151
Email: sales@garrett.com

Sport Division

Toll Free (US & Canada): **1.800.527.4011**

Security Division

Toll Free (US & Canada): **1.800.234.6151**

Website: **www.garrett.com**

Vaughan Garrett's
**FAVORITE FIND
OF THE MONTH**

SHOW US YOUR FINDS!

The Vaughan Garrett Find of the Month competition will continue, and we believe this is a great time to submit your stories and photos. Submit now for your chance to win a

FREE Garrett metal detector!

Scan the links below to see
the most recent winners!

U.S. winners



International winners



Vaughan Garrett

Warranty Protection: Garrett stands behind every product it builds and offers dependable warranty protection to each buyer. All Garrett land detectors and searchcoils are protected by a two-year limited parts and labor warranty. Sea Hunter is protected by a one-year limited parts and labor warranty. In the course of product improvement, Garrett reserves the right to make changes to the design and technical features of its products.

ACE 150, ACE 200/i, ACE 250, ACE 300/i, ACE 400/i, ACE Apex, All Metal Iron Audio, AT Max, AT Gold, AT Pro, ATX, Automatic Ground Track, Axiom, Coin Alert, Crossfire, Deepseeker, Depth Multiplier, EagleEye, Enhanced Iron Resolution, Fast Track, Garrett's Gravity Trap, GTA, Graphic Target Analyzer, GTI, Graphic Target Imaging, GTP, Graphic Target Profiling, Ground Balance Window, Iron Audio, Master Hunter, Power Master, Pro Mode Audio, Pro-Pointer, Pro-Pointer AT, RAM Books, Scan Track, Scorcher, Sea Hunter Mark II, ScubaMate, Super Deep Imaging, Super Sluice, Super Sniper, Target Imaging, Texas Twister, TreasureEye, TreasureHound, Treasure Vision, Treasure Sound, Z-Lynk, Garrett Metal Detectors and garrett.com are trademarks and registered trademarks of Garrett Electronics, Inc.

PH1540121.D 05/2022 © 2022 Garrett Electronics, Inc.

Products and special offers listed in this Buyer's Guide are effective through March 31, 2023.

