

# Garrett PD 6500i™

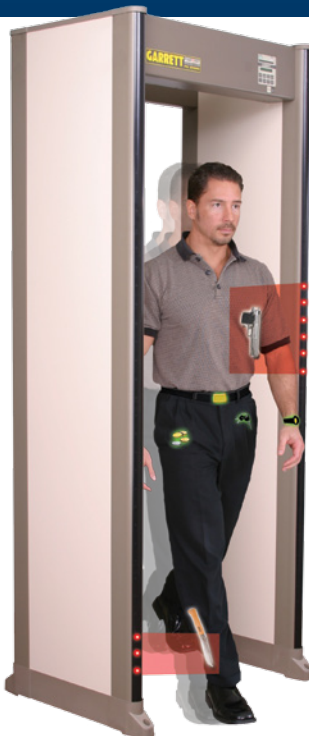
Model # 1168411 (Beige color scheme)  
Model # 1168414 (Gray color scheme)  
(See back panel for other models)

**GARRETT: The Global Leader of Security Metal Detectors and Checkpoint Screening**



## APPLICATIONS:

- Airports
- Correctional Facilities
- Arenas
- Public Buildings
- Private Buildings
- Schools
- Special Events
- Loss Prevention
- Nuclear Facilities
- Transportation Terminals
- Courthouses
- Corporate Security
- Historical Landmarks



## Enhanced Pinpoint Walk-Through Metal Detector

The PD 6500i leads the industry with superior pinpoint technology and unmatched discrimination features. Designed for maximum patron throughput without compromising security, the PD 6500i is the walk-through of choice for security professionals worldwide.

### FEATURES

- **33 Pinpoint Zones** to precisely identify multiple target locations from head to toe on the left, center and right sides of the body.
- **22 Standard Programs** for application versatility.
- **International Security Standards**—The PD 6500i meets the world's highest test certifications, including the following international airports:



- **Directional Counter** with four settings for patron counting (forward, reverse, subtraction reverse and bi-directional).
- **Dual Detection:** with transmitters and receivers in each panel, the PD 6500i is like having two metal detectors in one. By scanning from both sides, the PD 6500i provides superior detection, uniformity and performance.
- **Advanced Broadband Detection Technology** provides superior target analysis, ferrous and non-ferrous weapons detection, discrimination and higher patron throughput.
- **Superior Versatility:** settings designed for airports, courthouses, prisons, schools, facilities, special events, mass transit, loss prevention and many other applications.
- **Optional Accessories** provide networking, remote control, monitoring, data analysis and group management.
- **Meets IP55 Standards** for water and foreign matter protection.

### TRAINING

Garrett Metal Detectors is the only manufacturer to offer an advanced training course in metal detection checkpoint screening. Now, you can learn from the industry's leading team of metal detection experts. Call today to enroll in The Garrett Academy.

### Advanced Multiple Target Pinpointing

The only metal detector approved for U.S. and European airports that indicates if the target is located on the left, right or center of the body as well as its height.



Available in gray or beige color scheme

**GARRETT**  
Academy of Metal Detection

# PD 6500i™

## Enhanced Walk-Through Metal Detector

**GARRETT: The Global Leader of Security Metal Detectors and Checkpoint Screening**

### Easy Assembly

The PD 6500i's modular design allows for a quick and simple assembly of its 4 (four) sub assemblies using only 8 (eight) screws and 3 (three) internal cable connections.



### Pinpoint Zone Detection

Garrett's exclusive multiple target pinpointing with 33 distinct zones shows precise target location on the left, center and right side of the body from head to toe.



### Audible and Visual Alarms



Audible alarm and visual LED lights signal when a target has been detected.



### Overhead Control Unit

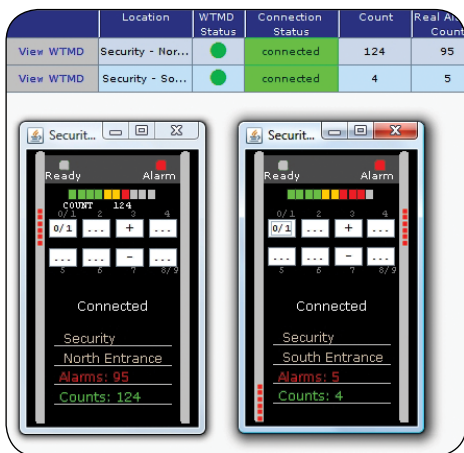
LCD Display, alarm lights, LED bar graphs and control touchpads plus all wiring, connections and electronics are integrated into a single, lockable overhead compartment which eliminates exposure of wires and external control box.

### Entry Pacing Lights

Smooth, efficient traffic flow with easy-to-view, eye-level pacing lights with international "wait"  and "proceed"  symbols on the entrance side of each panel.

### Directional Counter

Traffic flow can be counted in four different methods, as seen above: forward direction only (FWD ONLY); reverse direction only (REV ONLY); forward direction counted and each reverse direction subtracts (SUB DIV); or patrons passing in either direction are all counted (BIDIRECT).



### Advanced Networking

Manage walkthroughs individually or as groups and perform statistical analysis via network with optional CMA Interface Module. Supervisors can remotely access controls, visual alarms and statistics.

### Multi-Brand Compatibility

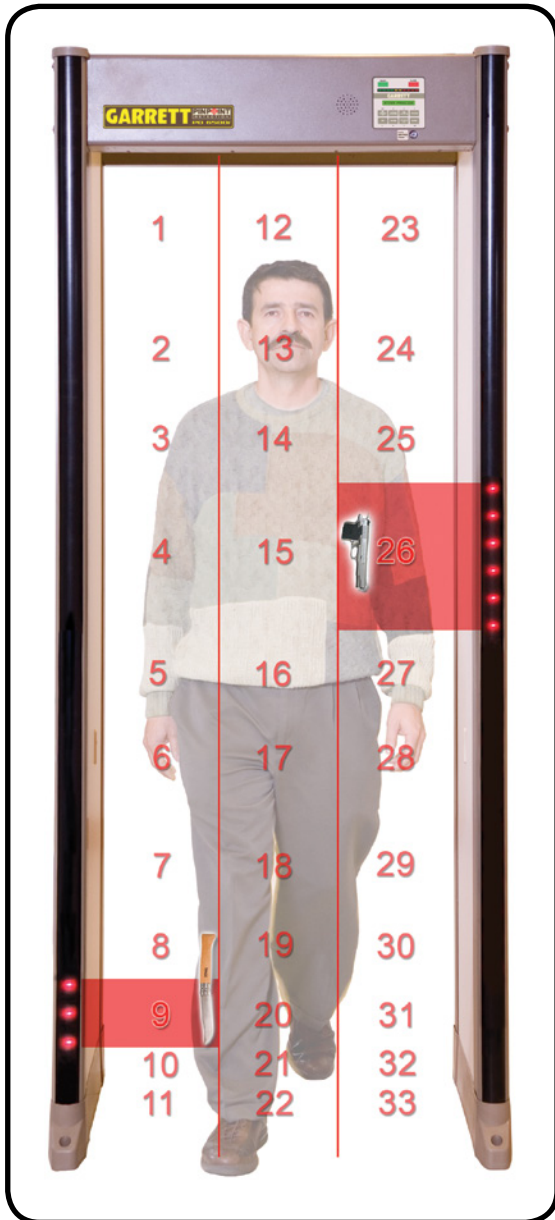
The Garrett PD 6500i—with numerous frequency selections and excellent interference rejection—can be added to existing checkpoints without having to replace other brand units.

### Access Control Panel

Allows authorized personnel with specific, multi-level security codes to change settings. A tamper alarm sounds within 10 seconds after the Access Touchpad is pressed, unless a proper access code is entered. The PD 6500i maintains all settings even when disconnected from power and does not require recalibration each time the unit is turned OFF and back ON. No battery required for memory retention.



## GARRETT PD 6500*i* SPECIFICATIONS



**ABOVE:** (Exit view) Indication of multiple weapons within 33 detection zones.

### Multi-Dimensional Coil Design

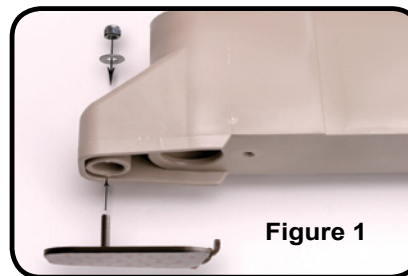
The PD 6500*i*'s exclusive multi-dimensional coil design provides unmatched detection of potentially lethal metal items such as guns, knives and other flat and rod-shaped weapons regardless of location and orientation.

### 33 Distinct Pinpoint Detection Zones

The PD 6500*i* offers exclusive multiple target pinpointing with 33 distinct zones for full target coverage on the left, center and right side of the body from head to toe.

### Digital Signal Processor (DSP) Based Technology

DSP provides greater sensitivity, noise immunity, discrimination, detection uniformity and overall product reliability.



**Figure 1**

### Floor Mounting Option

The PD 6500*i* can be mounted using the optional Adhesive Floor Mounting Kit (Figure 1), which can be used to protect valuable flooring surfaces while preventing unit movement.

Passageway Interior	Overall Exterior	Shipping
Width 30" (0.76 m)	Width 35" (0.9 m)	Width 35.5"
Height 80" (2 m)	Height 87" (2.2 m)	Height 92" (2.3m)
Depth 23" (0.58 m)	Depth 27" (0.69 m)	Depth 6.5" (0.17 m)

Weight: 143 lbs. (64 kg)

Shipping Weight: 165 lbs. (74 kg)

Specifications shown are for standard 1168411, 1168414 and 1168412 units.

While the Garrett PD 6500*i* is in operation, a self-test of all systems is performed continuously with any failures or problems immediately reported on the LCD display.

## REGULATORY INFORMATION

The PD 6500*i* is certified to meet Transportation Security Administration (TSA) requirements for U.S. airports, ECAC, STAC, AENA requirements for European airports and other international security standards.

Meets Electrical Safety and Compatibility Requirements for CE, FCC, CSA, IEC (CB certification), ICNIRP and IEEE.

The PD 6500*i* meets U.S. and International regulatory requirements for electromagnetic safety. Extensive research has found no information that would indicate Garrett products have adverse effects on pregnancy, medical devices (such as pacemakers) or magnetic recording media. However, directives by physicians and medical device manufacturers regarding metal detectors should be followed.

### SPECIFICATIONS

#### Operating Temperatures

-4°F (-20°C) to + 158°F (70°C); Humidity: To 95% noncondensing.

#### Power

Fully automatic 100 to 240 VAC, 50 or 60 Hertz, 55 watts; no rewiring, switching or adjustments required.

#### Weatherproofing / Foreign Object Protection Standards

Meets IP 55, IEC Standard. "Degrees of Protection provided by Enclosures," IEC 529.

#### Target Pinpointing Lights

Thirty-three (33) distinct zones are displayed with two (2) independent columns of LEDs located on exit side of PD 6500i.

#### Programs

Twenty-two (22) independent programs designed to meet all installation-specific requirements including ECAC requirements for European airports and TSA requirements for U.S. airports.

#### Multi-Unit and Multi-Brand Compatibility

2,300 selectable operating frequencies and multiple channels allow the PD 6500i to operate in close proximity to other PD 6500i/s as well as with non-Garrett walk-throughs.

#### Interference Suppression

Advanced analog and digital filtering—as well as adjustable operating frequencies—eliminate the potential effects from x-ray units, radios and other electrical interference sources.

#### Directional Counter

Counter tracks the number of patrons that have passed through the detector, the direction of patrons, the number of alarms and calculates alarm percentage. Four directional count settings (forward, reverse, subtraction reverse and bi-directional).

#### Random Alarm Feature

Provides ability to randomly alarm on a selected percentage of non-alarming persons; adjustable from 0 to 50 percent.

#### Alarms

Audible tone and volume adjustable. Bright LED visual alarm.

#### Pacing Lights

International symbols located at entrance.

#### Tamper-Proof

All settings are secured with a key lock and two levels of access codes. Further security is accomplished with a cabinet lock which prevents unauthorized access to physical cables, connectors and electronics.

#### Control Outputs

Solid state switches (low voltage AC or DC) for operating external alarms and control devices.

#### Construction

Attractive scratch and mar-resistant laminate. Detection Heads and Support: Heavy duty aluminum.

#### Warranty

24 months, parts and labor

### Other PD 6500i Model Numbers and Descriptions

North American Powercord	European Powercord	Description
1168411	1168421	Standard 30" clearance in neutral beige color scheme.
1168414	1168424	Standard 30" clearance in gray color scheme.
1168412	1168422	<b>EZL</b> —The PD 6500i in gray color scheme with zones lights on both the entry and exit sides, allowing the operator to view the location of the alarmed object from any position. Standard 30" clearance.
1168432	1168434	The PD 6500i in gray color scheme with 32" ADA-compliant passageway.
1168428	1168429	The PD 6500i in gray color scheme with 28" passageway for restricted spaces.

### ACCESSORIES

**A. Battery Backup Module**—Allows up to ten (10) hours of backup use. Charger included. (Model # 2225400) (Euro Model # 2225470)



**B. Desktop Remote Control with Zone Indication**—For remote operation of the PD 6500i from up to 50 feet (standard). Contact Garrett for optional lengths. (Model # 2266400)



**C. Operational Test Piece (OTP)**—Designed to FAA 3-gun test requirements. (Model # 1600600)



**D. Flat Test Piece (FTP)**—Designed to represent a small knife or box cutter. (Model # 1620570)



**E. Removable MagnaDolly**—Removable wheel assembly for easy portability. (Model # 1168000)



**Permanent MagnaDolly**—Permanently fastens to the PD 6500i for easy portability. (Model # 1169000, not shown)

**F. Control Monitor Analyzer (CMA)**—The CMA Interface Module is used with a 10baseT network and a personal computer. It allows control, real time monitoring and diagnostics from a remote location. The internal memory records all changes to settings and passenger traffic and alarm history for analytical evaluation. (Model # 1168310)



**G. Adhesive Floor Mount Kit**—4 included. (Beige model # 1604100) (Gray model # 1604101)



**H. 10 ft. Cord Jumper**—Allows multiple PD 6500i units, in close proximity, to be linked to the same power source. (Model # 9431900)

